

An Introduction to the SMMT-QMD UK Automotive Quality Network

Before we start...

- Live polling during the talk
- Using your phone please navigate to: live.voxvote.com
- Enter our 5 digit pin code: **32600**

What is the SMMT-QMD Automotive Quality Network?

Working as part of Automotive Council UK

- Supply Chain Group (Workstream 2)

Improving the UK Automotive supply chains competitiveness:

1. Increasing spend
2. Increasing & safeguarding UK employment
3. Retaining current manufacturing capability
4. Increasing capabilities of targeted Suppliers



SMMT-QMD Automotive Quality Network

- A group of interested OEM & Tier-1 suppliers
- With the purpose of developing and improving the quality and systems elements of the UK supply chain.



SMMT-QMD Quality Network Capability

- Diverse membership
 - Cross section of OEMs - links to Global OEM groups
 - Large Tier-1 suppliers - cascade requirements down the supply chains
- Technical expertise in Quality and Measurement
- Globally recognised training development and delivery
- Involvement and links to global certification groups
- Existing links to the diverse UK automotive industrial base

SMMT-QMD Automotive Quality Network

Goal and objectives (Terms of Reference):

1. Development of solutions to common problems
2. Provide input to standards development
3. Input to the Automotive Council UK

To enable a path for the UK automotive supply base to provide feedback on Quality and Management Process/Systems issues.

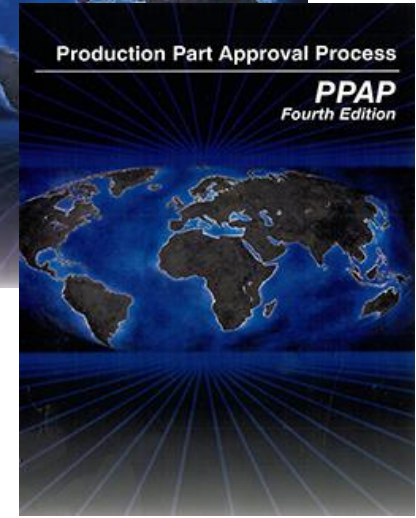
- We're here to support you...!

Example of SMMT-QMD Activity

Improving New Product Introduction (NPI) capabilities of the UK's supply chain in order to maintain the global competitiveness of UK Automotive sector.

... took the challenge to develop a national, quality assured, best practice approach to improve the new product launch capability of supply chain companies.

... the outcome, endorsed by OEMs and designed by SMMT Industry Forum is... New Product Launch eXcellence (NPLX)



What is NPLX?

- ▶ Modular training programme to improve new product launch capabilities
- ▶ Each module is designed around the specific business environments and operational roles that support new product launch
- ▶ Provides essential skills and training
- ▶ Provides an Automotive sector-wide framework for managing new product launches from concept to post production
- ▶ Supports IATF16949:2016 which mandates effective NPI processes

What should we be working on...?

- We want to take this opportunity to seek input from the wider UK Quality community.
 - What do you have problems with day-to-day?
 - What do you feel is missing that would help you company develop?
 - Where would you seek support and guidance on these issues?
 - How can we develop solutions that you can utilise to push you to world class?

The Challenge for you...

Data from the UK non-conformities from IATF audits:

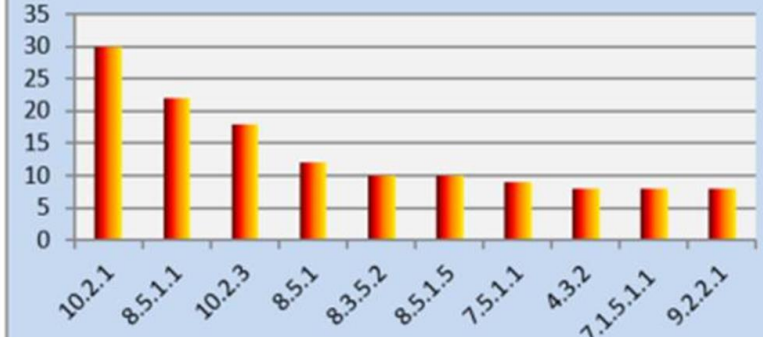
Top 3 Majors:

- 1) 10.2.1: Non-conformity & corrective action
- 2) 8.5.1.1: Control plan
- 3) 10.2.3: Problem solving

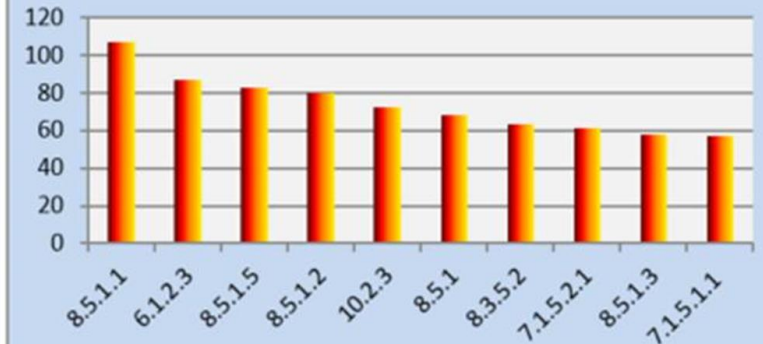
Top 3 Minors

- 1) 6.1.2.3: Contingency plans
- 2) 8.5.1.5: Total Productive Maintenance
- 3) 8.5.1.2: Standardised work

TOP 10 Major NC



TOP 10 Minor NC



The Challenge for you...

With your experience in mind, where should we be concentrating our efforts?
Do your perceptions of weaknesses match with the data?

Phone Polling

What area do you see as a weakness, where you would be most likely to seek support for improvement?

- a) 10.2.1: Non-Conformity & Corrective Action
 - b) 8.5.1.1: Control Plan
 - c) 10.2.3: Problem Solving
 - d) 6.1.2.3: Contingency Plans
 - e) 8.5.1.5: Total Productive Maintenance
 - f) 8.5.1.2: Standardised Work
-
- Using your phone please navigate to: live.voxvote.com
 - Enter our 5 digit pin code: **32600**
 - Make sure you press “vote” once you have selected your answer.

Polling results

[Link](#) to results website

Other Challenges...?

Capturing other challenges:

What areas do you feel the SMMT-QMD UK Quality Network should be concentrating on to help develop the UK as a globally leading Automotive Supply Chain?

- Flip Charts around the venue and breakout Rooms
- Please capture your thoughts on the A5 post-it notes provided
(If you are comfortable to be contacted in future, please leave a contact e-mail to enable follow-up)
- What do you see as areas for improvement?
- What you would like to see as package of support?



Summary

Results from the phone poll

Development of ideas from the Post-it notes into working areas.

Enjoy the rest of the expert talks throughout the day...!

*Thank
you!*